

## 4010 LUMINY

«Mini» version in the Luminy spotlight range.

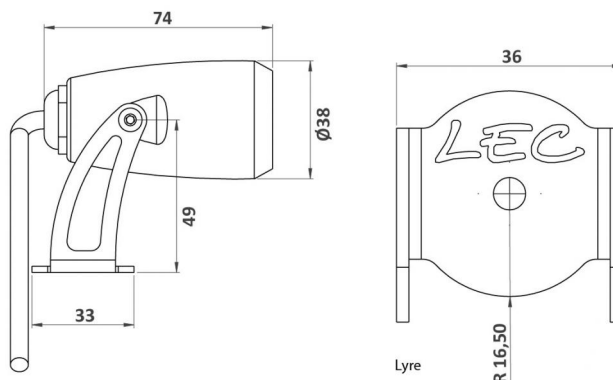
Installs on roads/floors, wall or poles with bespoke accessories.

### APPLICATIONS:

- Highlight architectural features
- Highlight landscapes
- Path, alley, street furniture

### CARACTERISTICS

- Anodised machined aluminium body
- Vandalproof organic glass window
- 316L Stainless steel bracket and screws
- Thermolacquered bracket on request



Number of LEDs	1
Type of LEDs	Power LEDs. Contact us for hot countries.
Color(s)	Warm white 2700K (F), Warm white 3000K (E), Neutral white 4000K (N), Cool white 6000K (W), Red (R), Amber (O), Green (V), Blue (L), Royal blue (K)

Select your specific requirements with our product configurator, by filtering technical criteria at the following link:

<http://www.lec-lyon.com/4010-luminy-r136>

### APPLICATION



#### Outdoor lighting

Standard flux : 223 lm

*This value is gained from the optimum output of the LED number, inclusive of optic, for a cool white LED (6000K)*

### CONFIGURATEUR.EMPLACEMENT



Wall lights



Masts

### CARACTERISTICS

Weight : 220 g

### Options of luminous effects



Adjustable on 2 axis



Rotating beam



Beam with various openings



Transparent flat window

### Power supply - Control



Cable length: 1 m



**Integrated :** 24V-PWM  
**Remote :** 24V-0/10V, 24V-DMX, 24V-DALI

### Material



Anodised glazed aluminium



Vandalism-proof, scratch-proof, UV-proof, polycarbonate window, M2

### Mechanical strength - Waterproofness



**IK10** Resists impacts up to IK10  
**20J** 20J



**IP67** Tight for temporary immersion

## 4010 LUMINY

This datasheet gives you all the available optics for this product, consistent with the number of LEDs.

URL of this product: <http://www.lec-lyon.com/4010-luminy-r136>

