

## 5652 CLEM

Lightbars can be ordered in four length. Can be installed individually or as a continuous line.

With very extensive asymmetric lenses, uniform illumination is produced with raking positioning.

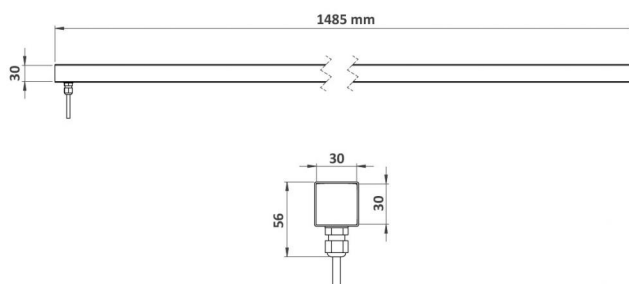
### APPLICATIONS:

- Highlight architectural features,
- Facade lighting from a belt-course
- Continuous line
- Direct or indirect lighting of public space
- Underpass

### CARACTERISTICS

Length = 1485 mm

- Vandalproof profiled organic glass
- Various mounting accessories possible (fixed or adjustable)
- RGBW options available



|                |  |
|----------------|--|
| Number of LEDs | 18   |
| Type of LEDs   | Power LEDs. Contact us for hot countries.  |
| Color(s)       | Warm white 2700K (F), Warm white 3000K (E), Neutral white 4000K (N), Cool white 6000K (W), Red (R), Amber (O), Green (V), Blue (L), Royal blue (K) |

Select your specific requirements with our product configurator, by filtering technical criteria at the following link:

<http://www.lec-lyon.com/5652-clem-r2438>

### APPLICATION



#### Outdoor lighting

Standard flux : **4014 lm**

*This value is gained from the optimum output of the LED number, inclusive of optic, for a cool white LED (6000K)*

### CONFIGURATEUR.EMPLACEMENT



#### Wall lights

### CARACTERISTICS

Weight : **800 g**

### Options of luminous effects



RGBW option



Adjustable on 1 axis



Rotating beam



Beam with various openings



Transparent flat window



Colour control system (optional)

### Power supply - Control



Cable length: **1 m**



**Integrated :** 24V-PWM  
**Remote :** 24V-0/10V, 24V-DMX, 24V-DALI

### Material



Vandalism-proof, UV-proof, polycarbonate window

### Mechanical strength - Waterproofness

**IK06** Resists impacts up to IK06

**IP67** Tight for temporary immersion

## 5652 CLEM

This datasheet gives you all the available optics for this product, consistent with the number of LEDs.

URL of this product: <http://www.lec-lyon.com/5652-clem-r2438>

