

2852H PYRAMIDE

Square road/floor marker-lighting

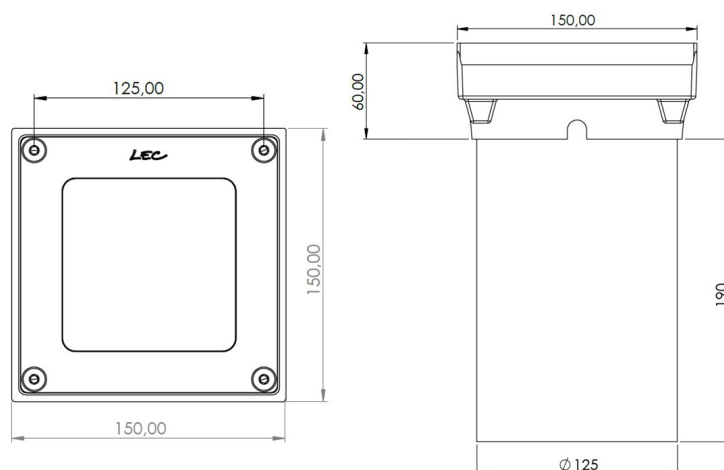
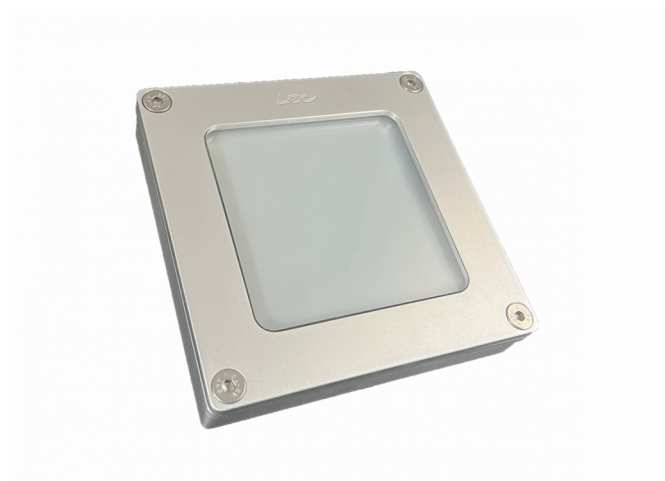
APPLICATIONS:

- Cycle paths and pedestrian paths marker lighting
- Signage for traffic island, pedestrian crossing
- Public space enhancement

CARACTERISTICS

Homogeneous window

- Colourless anodised machined aluminium body
- Vandalproof organic glass window
- 316L Stainless steel screws
- Flush-recessed
- 2 possible recess dimensions
- Non-steering



Number of LEDs	64
Type of LEDs	120° SMD LEDs (S)
Color(s)	Warm white 2700K (F), Warm white 3000K (E), Neutral white 4000K (N), Cool white 6000K (W), Red (R), Amber (O), Green (V), Blue (L)

Select your specific requirements with our product configurator, by filtering technical criteria at the following link:

<http://www.lec-lyon.com/2852hz-pyramide-r855>

APPLICATION

- ☒ Marker-lighting

CONFIGURATEUR.EMPLACEMENT

- ☒ Ground flush recessed fittings
- ☐ Ground recessed fittings

CARACTERISTICS

Weight : 1000 g

Options of luminous effects

- ☒ Non adjustable
- ☐ Flat homogeneous window (optional)

Power supply - Control

- ☒ Cable length: 1 m

Integrated : 24V-PWM
Remote : 24V-0/10V, 24V-DMX, 24V-DALI

Material

- ☒ AL Anodised glazed aluminium
- ☒ PC 2 Vandalism-proof, scratch-proof, UV-proof, polycarbonate window, M2

Mechanical strength - Waterproofness

- IK10** Resists impacts up to IK10
- 20J**
- IP68** Tight for extended immersion